

DECORATIVE AND CONSUMER SOLUTIONS



ABOUT DURACO SPECIALTY MATERIALS

OVERVIEW

- 75 years in service
- 300+ employees
- 6,800 customers

MANUFACTURING

- Duraco HQ: Forest Park, IL
- Filmquest: Bolingbrook, IL
- Infinity Tapes HQ: Lawrence, MA
- 3 Sigma: Troy, OH & Lancaster, OH
- Rayven: St. Paul, MN & Owatonna, MN
- Strata-Tac: St. Charles, IL

Advanced Warehousing

- Forest Park, IL
- Lawrence, MA
- Los Angeles, CA
- Mississauga, Canada

CAPABILITIES:

- Coating, laminating, slitting, die-cutting, and custom conversion
- R&D, design engineering, quality, and regulatory compliance
- Advance warehousing and fulfillment support
- Same day shipping

BROAD, ESTABLISHED CUSTOMER BASE:

- Point-of-purchase (POP), decorative and consumer, flexible packaging, general distribution, general industrial and construction, graphics and communication, healthcare, OEM manufacturing, specialty label, transit packaging and e-commerce



FIVE COMPANIES, ONE VISION, ONE FOCUS, ONE DURACO




Duraco Specialty Materials and its three business units – Duraco Direct, Duraco Specialty Films & Labels, and Duraco Specialty Coatings & Liners – is dedicated to meeting the unique needs of our customers with best-in-class service and responsiveness.

Scan the QR code to learn more about these innovative and complementary companies.



OVERVIEW DECORATIVE & CONSUMER

The Duraco Specialty Materials portfolio of companies offers a complete portfolio of pressure-sensitive tapes, labels, functional coatings for flexible packages, and release liners. These solutions are available with permanent/permanent or permanent/removable constructions and customizable options to meet the customer's exact specifications.

	Tapes	Labels	Functional Coatings	Liners
Duraco	Pages 5-29			
3 Sigma		Pages 30-33		
Strata-Tac		Pages 34-35		
Filmquest			Pages 36, 38	
Rayven			Pages 37, 38	Pages 41-42
Infinity Tapes				Pages 39-40



REMO ONE®

DECORATIVE & CONSUMER

REMO ONE®

Removable foam tape with aggressive permanent adhesive on one side and removable adhesive on the other

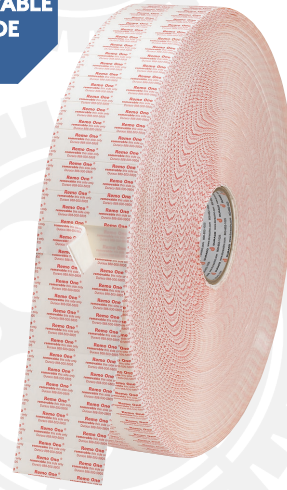
Specifications

- Adhesive: Permanent rubber-based on one side, removable adhesive on mounting side
- Application Temperature: 65°F to 100°F
- Service Temperature: -20°F to 150°F
- 1/2 lb. per sq. in. of tape (conditions and variables in applications can produce different stresses and affect holding power)
- Intended for one-time use on hard, non-delaminating surfaces

TEMPORARY
DISPLAYS

CHANGEABLE
GRAPHICS

REMOVABLE
1 SIDE



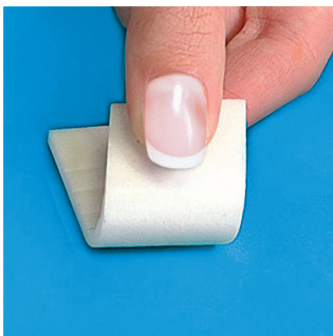
Pre-Cut Pieces on a Roll, White

Part Number	Thickness in	Width in	Length in	Pieces/Roll
473847	1/32	1/2	1/2	10,000
470797	1/32	1/2	1	10,000
473863	1/32	1/2	1-1/2	10,000
470798	1/32	1/2	2	10,000
470799	1/32	1/2	3	5,000
470800	1/32	1/2	4	5,000
470801	1/32	1/2	5	3,000
472892	1/32	1/2	6	3,000
472894	1/32	1/2	8	2,500
473855	1/32	3/4	3/4	10,000
470803	1/32	3/4	1	10,000
470804	1/32	3/4	2	5,000
470805	1/32	3/4	3	5,000
470806	1/32	3/4	4	2,500

(more 1/32" sizes continued on next page)

WHERE TO USE REMO ONE®

- Promotional and temporary signage
- Temporary and permanent displays
- Single use promotional graphics
- Wobblers and shelf talkers



REMOVES
CLEANLY.
NO RESIDUE.



DECORATIVE AND CONSUMER PRODUCTS

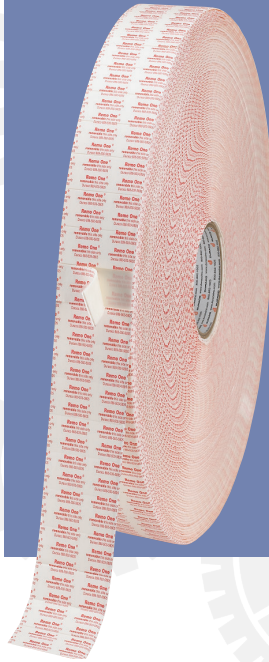


REMO ONE®

DECORATIVE & CONSUMER

REMO ONE® MOST POPULAR

Pre-Cut Pieces on a Roll, White



Part Number	Thickness	Width	Length	Pieces/Roll
	in	in	in	
470754	1/32	1	1	6,000
470748	1/32	1	2	6,000
470755	1/32	1	3	2,500
470809	1/32	1	4	2,500
470750	1/16	1	2	5,000
470751	1/16	1	3	2,500
470756	1/16	1	4	2,000
472912	1/16	1	6	2,000

TEMPORARY
DISPLAYS

CHANGEABLE
GRAPHICS

REMOVABLE
1 SIDE

Pre-Cut Pieces on a Roll, White

Part Number	Thickness	Width	Length	Pieces/Roll
	in	in	in	
470754	1/32	1	1	6,000
470748	1/32	1	2	6,000
470755	1/32	1	3	2,500
470809	1/32	1	4	2,500
470810	1/32	1	5	2,000
472900	1/32	1	6	2,000
478714	1/32	1	7	2,500
478715	1/32	1	8	2,500
478713	1/32	1	10	2,500
473778	1/16	1/2	1/2	10,000
470830	1/16	1/2	1	10,000
470831	1/16	1/2	2	10,000
470832	1/16	1/2	3	5,000
470833	1/16	1/2	4	5,000
470834	1/16	1/2	5	3,000
472904	1/16	1/2	6	3,000
470835	1/16	1/2	10	2,000

(more 1/16" sizes continued on next page)



DECORATIVE AND CONSUMER PRODUCTS

REMO ONE®

DECORATIVE & CONSUMER

Pre-Cut Pieces on a Roll, White

Part Number	Thickness in	Width in	Length in	Pieces/Roll
470838	1/16	3/4	3	2,500
470749	1/16	1	1	5,000
473862	1/16	1	1-1/2	7,500
470750	1/16	1	2	5,000
470751	1/16	1	3	2,500
470756	1/16	1	4	2,000
470842	1/16	1	5	2,000
472912	1/16	1	6	2,000
478712	1/16	1	8	2,000
470863	1/8	1/2	2	7,500
470757	1/8	1	1	5,000
470752	1/8	1	2	2,500
470753	1/8	1	3	2,000
470872	1/8	1	4	2,000
470873	1/8	1	5	1,500
472924	1/8	1	6	1,500
475844	1/4	1/2	1	7,500
472928	1/4	1	1	5,000
475502	1/4	1	2	2,300
502131	1/4	1	3	1,000

TEMPORARY
DISPLAYS

CHANGEABLE
GRAPHICS

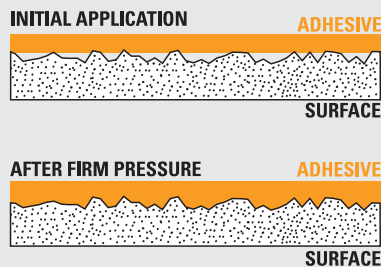
REMOVABLE
1 SIDE



DECORATIVE AND CONSUMER PRODUCTS



Foam tapes allow for greater surface contact on irregular surfaces. Firm, even pressure improves the bond.



REMO ONE®

DECORATIVE & CONSUMER

TEMPORARY
DISPLAYS

CHANGEABLE
GRAPHICS

REMOVABLE
1 SIDE



Pads are
great to
include in kits
with all kinds
of temporary
signs

Pre-Cut Pieces in a Pad, White

Part Number	Thickness in	Width in	Length in	Pieces/Pad	Pieces/Carton
470812	1/32	1/2	1	10	7,500
470813	1/32	1/2	2	10	4,000
470814	1/32	1/2	3	10	2,500
470815	1/32	1/2	4	10	2,000
470816	1/32	1/2	5	10	1,500
470820	1/32	3/4	3	10	1,750
470824	1/32	1	1	10	4,000
470825	1/32	1	2	10	2,000
470826	1/32	1	3	10	1,250
470827	1/32	1	4	10	1,000
470828	1/32	1	5	5	750
470829	1/32	1	10	2	400
470844	1/16	1/2	1	10	7,500
470856	1/16	1	1	10	4,000
470857	1/16	1	2	10	2,000
470858	1/16	1	3	10	1,250
470859	1/16	1	4	10	1,000
470861	1/16	1	10	2	400
470884	1/8	1	1	10	3,000
470886	1/8	1	3	10	1,000
470887	1/8	1	4	10	750

IT'S SIMPLE. JUST SAMPLE!

If you're not sure which tape will work best,
you can request **FREE SAMPLES**
to ensure proper fit and function.

CALL US NOW!

866 800 0775



REMO ONE®

DECORATIVE & CONSUMER

Short Rolls, White

1.5" diameter core

Part Number	Thickness in	Width in	Length ft	Rolls/Carton
471444	1/32	1/2	30	72
471445	1/32	3/4	30	45
471446	1/32	1	30	36
471447	1/16	1/2	30	40
471449	1/16	1	30	20

TEMPORARY
DISPLAYS

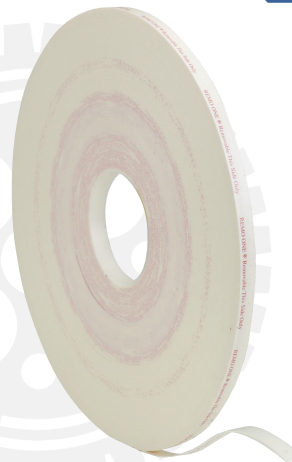
CHANGEABLE
GRAPHICS

REMOVABLE
1 SIDE

Standard Rolls, White

3" diameter core

Part Number	Thickness in	Width in	Length ft	Rolls/Carton
471435	1/32	1/2	216	24
472226	1/32	1/2	216	12
471439	1/32	3/4	216	16
471436	1/32	1	216	12
471437	1/16	1/2	216	24
471440	1/16	3/4	216	16
471438	1/16	1	216	12
471441	1/8	1/2	108	24
471442	1/8	3/4	108	16
471443	1/8	1	108	12



Long Rolls, White

3" diameter core

Part Number	Thickness in	Width in	Length ft	Rolls/Carton
472883	1/32	1/2	900	16
472884	1/16	1/2	450	24

Remo One®
used on
price channels
allows removal
without adhesive
residue



DECORATIVE AND CONSUMER PRODUCTS



REMO ONE®

DECORATIVE & CONSUMER

TEMPORARY
DISPLAYS

CHANGEABLE
GRAPHICS

REMOVABLE
1 SIDE

Standard Roll, Black

3" diameter core

Part Number	Thickness in	Width in	Length ft	Rolls/Carton
471453	1/32	1/2	216	12
471454	1/32	1	216	12
471455	1/16	1/2	216	12
471456	1/16	1	216	12
471457	1/8	1/2	108	12
471458	1/8	1	108	12

Diameters on a Roll, White

Part Number	Thickness in	Diameter in	Pieces/Roll
502457	1/32	1/2	5,000
502445	1/32	3/4	4,000
475837	1/32	1	3,000
502452	1/16	1/2	5,000
475839	1/16	1	3,000

Pre-Cut Pieces on a Roll, Black

Part Number	Thickness in	Width in	Length in	Pieces/Roll
470952	1/32	1	3	2,500
470976	1/16	1/2	3	5,000
470986	1/16	1	1	5,000
470988	1/16	1	3	2,500
471020	1/8	1	1	6,500
471022	1/8	1	3	2,000

Die cut
diameters
conform to
your shape!

NEED A CLEAR FOAM TAPE?

Check out our
REMO TWO® CLEAR

TIP

Remo One® eliminates the retailer's concern about tape residue.

DURACO.
DECORATIVE AND CONSUMER PRODUCTS

REMO ONE® PLUS

DECORATIVE & CONSUMER

TEMPORARY
DISPLAYS

CHANGEABLE
GRAPHICS

REMOVABLE
1 SIDE

REMO ONE® PLUS

Duraco's Remo One Plus is a double-sided adhesive foam tape that is removable one side and permanent on the other. Removes from hard non-delaminating surfaces such as wood, plastic and glass while offering four times the strength of standard removable tape.

Specifications

- Adhesive: Rubber-based on both sides; one side permanent, one side removable
- Application Temperature: 65°F to 100°F
- Service Temperature: -20°F to 150°F

Features

- Four times the strength of standard removable products
- Printed liner identifies the removable side
- Available in pre-cut pieces and continuous rolls
- Leaves no foam residue behind when removed
- Intended for one-time use on hard, non-delaminating surfaces

Continuous Roll, White

Part Number	Thickness in	Width in	Length ft	Rolls/Carton
479037	1/32	1/2	216	24
479038	1/32	3/4	216	16
479039	1/32	1	216	12
479040	1/16	1/2	216	24
479041	1/16	3/4	216	16
479042	1/16	1	216	12

Pre-Cut Pieces on a Roll, White

Part Number	Thickness in	Width in	Length ft	Pieces/Roll
479043	1/32	1	1	6,000
479044	1/32	1	2	6,000
479045	1/32	1	3	2,500
479046	1/32	1	4	2,500
479047	1/32	1	6	2,000
479048	1/16	1	1	5,000
479049	1/16	1	2	5,000
479050	1/16	1	3	2,500
479051	1/16	1	4	2,000
479052	1/16	1	6	2,000
479053	1/8	1	1	5,000
479054	1/8	1	2	2,500
479055	1/8	1	3	2,000
479056	1/8	1	4	2,000

WHERE TO USE REMO ONE® PLUS

- Temporary signs
- Price channel moldings
- Nameplates
- Shelf dividers
- Point of Purchase displays
- Metal shelving
- Merchandising racks

DECORATIVE AND CONSUMER PRODUCTS



THICK REMO ONE® DECORATIVE & CONSUMER

TEMPORARY
DISPLAYS

CHANGEABLE
GRAPHICS

REMOVABLE
1 SIDE



THICK REMO ONE®

Removable foam block with aggressive permanent adhesive on one side and removable adhesive on the other, used to create 3-D effects

Specifications

- Adhesive: Permanent rubber-based on one side, removable adhesive on mounting side
- Application Temperature: 65°F to 100°F
- Service Temperature: -20°F to 150°F
- Intended for one-time use on hard, non-delaminating surfaces
- For lightweight applications or filling gaps

Pre-cut Pieces on a Roll, White

Part Number	Thickness in	Width in	Length in	Pieces/Roll
470758	1/2	1	1	3,000
470760	1/2	1	2	1,800
470762	1/2	1	3	1,200

Pre-cut Pieces in a Pad, White

Part Number	Thickness in	Width in	Length in	Pieces/Pad	Pieces/Carton
470759	1/2	1	1	12	2,400
470768	3/4	1	1	36	4,320
470770	3/4	1	3	12	1,800
470773	1	1	1	36	6,012
470775	1	1	3	12	1,440
470784	1-1/2	1-1/2	1-1/2	12	1,440
470787	2	2	2	1	840

WHERE TO USE THICK REMO ONE®

- Promotional and temporary signage
- Temporary and permanent displays
- Single use graphics
- Wobblers and shelf talkers



TRY BEFORE YOU BUY!

Call or go online
to order free samples.



DECORATIVE AND CONSUMER PRODUCTS

THICK REMO ONE® DECORATIVE & CONSUMER

Pre-cut Pieces on a Roll, Black

Part Number	Thickness in	Width in	Length in	Pieces/Roll
470889	1/2	1	1	3,000

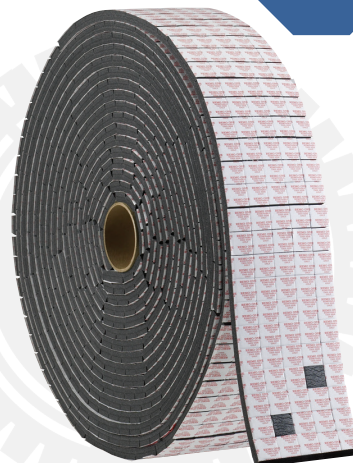
TEMPORARY
DISPLAYS

CHANGEABLE
GRAPHICS

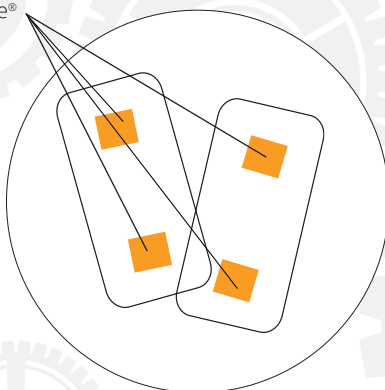
Pre-cut Pieces in a Pad, Black

Part Number	Thickness in	Width in	Length in	Pieces/Pad	Pieces/Carton
470890	1/2	1	1	12	2,400
470904	1	1	1	36	6,012

REMOVABLE
1 SIDE



Thick Remo One®



Place foam blocks 1" - 2" from the edge of dimensional graphics to create a clean 3-D effect.



**TRY BEFORE
YOU BUY!**

Call or go online
to order free samples.

DECORATIVE AND CONSUMER PRODUCTS



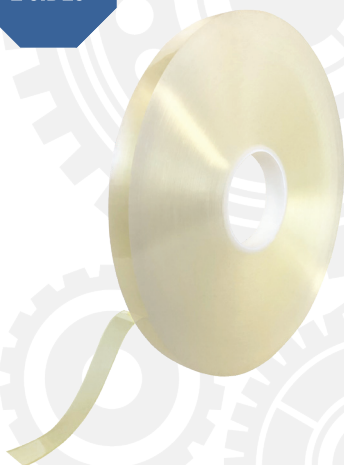
REMO TWO® CLEAR

DECORATIVE & CONSUMER

TEMPORARY
DISPLAYS

CHANGEABLE
GRAPHICS

REMOVABLE
2 SIDES



REMO TWO® CLEAR

Double-sided clear tape with a removable adhesive on both sides

Specifications

- Adhesive: Removable acrylic-based adhesive on both sides
- Application Temperature: 40°F to 175°F
- Service Temperature: 20°F to 180°F

Features

- Double-sided foam tape
- Removes cleanly from most hard, non-delaminating surfaces even after extended periods of time
- Intended for one-time use on hard, non-delaminating surfaces

Rolls

3" diameter core

Part Number	Thickness	Width	Length
	in	in	ft
477180	1/32	1/2	216
477181	1/32	3/4	216
477182	1/32	1	216

Pre-Cut Pieces on a Roll

Part Number	Thickness	Width	Length	Pieces/Roll
	in	in	in	
477183	1/32	1	1	1250
477184	1/32	1	2	1250
477185	1/32	1	3	1000
477186	1/32	1	4	1000

WHERE TO USE REMO TWO® CLEAR

- Promotional and temporary signage
- Single use graphics
- Temporary, plastic displays
- Clear acrylic displays

IT'S SIMPLE. JUST SAMPLE!

If you're not sure which tape will work best, you can request **FREE SAMPLES** to ensure proper fit and function.

CALL US NOW!

866 800 0775



DURACO.
DECORATIVE AND CONSUMER PRODUCTS

REMO TWO®

DECORATIVE & CONSUMER

TEMPORARY
DISPLAYS

CHANGEABLE
GRAPHICS

REMOVABLE
2 SIDES



REMO TWO®

Double-sided adhesive foam tape with our removable adhesive on both sides

Specifications

- Adhesive: Removable adhesive on both sides (not recommended in applications with direct UV exposure)
- Application Temperature: 65°F to 100°F
- Service Temperature: -20°F to 150°F
- Holding Power: 1/2 lb. per sq. in. of tape (conditions and variables in applications can produce different stresses and affect holding power)
- Intended for one-time use on hard, non-delaminating surfaces

Pre-cut Pieces on a Roll, White

Part Number	Thickness in	Width in	Length in	Pieces/Roll
471089	1/32	1/2	1	10,000
471090	1/32	1/2	2	10,000
471091	1/32	1/2	3	5,000
471093	1/32	1/2	5	3,000
471097	1/32	3/4	3	5,000
471101	1/32	1	1	6,000
471102	1/32	1	2	6,000
471103	1/32	1	3	2,500
471104	1/32	1	4	2,500
471105	1/32	1	5	2,000
471125	1/16	1/2	1	10,000
471126	1/16	1/2	2	10,000
471132	1/16	3/4	2	5,000
471133	1/16	3/4	3	2,500
471040	1/16	1	1	5,000
471137	1/16	1	2	5,000
471041	1/16	1	3	2,500
471138	1/16	1	4	2,000
471139	1/16	1	5	2,000
471042	1/8	1	1	5,000
471169	1/8	1	2	2,700
471170	1/8	1	3	2,000
472887	1/4	1	1	5,000

WHERE TO USE REMO TWO®

- Promotional and temporary signage
- Single use graphics
- Consumer packaging
- In kits unattached to graphics

DECORATIVE AND CONSUMER PRODUCTS



REMO TWO®

DECORATIVE & CONSUMER

Pre-Cut Pieces in a Pad, White

Part Number	Thickness in	Width in	Length in	Pieces/Pad	Pieces/Carton
471107	1/32	1/2	1	10	7,500
471108	1/32	1/2	2	10	4,000
471119	1/32	1	1	10	4,000
471120	1/32	1	2	10	2,000
471121	1/32	1	3	10	1,250
471122	1/32	1	4	10	1,000
471123	1/32	1	5	5	750
471152	1/16	3/4	10	2	500
471153	1/16	1	1	10	4,000
471154	1/16	1	2	10	2,000
471155	1/16	1	3	10	1,250
471183	1/8	1	1	10	3,000
471184	1/8	1	2	10	1,500
471185	1/8	1	3	10	1,000

TEMPORARY
DISPLAYS

CHANGEABLE
GRAPHICS

REMOVABLE
2 SIDES



TIP

Use Remo Two® when packed out for in-store application to avoid wrong side use.

**SPRING
SALE**

**BIG
SAVINGS**

**On All
New Sandals**

Use Remo Two® to attach promotional or seasonal signs without damaging the walls.*

**Removes cleanly from most hard, non-delaminating surfaces.*



Remo Two®

DURACO.

DECORATIVE AND CONSUMER PRODUCTS

REMO TWO®

DECORATIVE & CONSUMER

TEMPORARY
DISPLAYS

CHANGEABLE
GRAPHICS

REMOVABLE
2 SIDES

Short Rolls, White

1.5" diameter core

Part Number	Thickness in	Width in	Length ft	Rolls/Carton
471474	1/32	1/2	30	72
471476	1/32	1	30	36
471477	1/16	1/2	30	40
471478	1/16	3/4	30	25
471479	1/16	1	30	20
471482	1/8	1	15	20

Standard Rolls, White

3" diameter core

Part Number	Thickness in	Width in	Length ft	Rolls/Carton
471465	1/32	1/2	216	12
471466	1/32	3/4	216	16
471467	1/32	1	216	12
471468	1/16	1/2	216	12
471469	1/16	3/4	216	16
471470	1/16	1	216	12
471471	1/8	1/2	108	12
471472	1/8	3/4	108	16
471473	1/8	1	108	12

Standard Rolls, Black

3" diameter core

Part Number	Thickness in	Width in	Length ft	Rolls/Carton
471483	1/32	1/2	216	12
471484	1/32	1	216	12
471485	1/16	1/2	216	12
471486	1/16	1	216	12

DECORATIVE AND CONSUMER PRODUCTS



Always start with a
CLEAN SURFACE

Dirty, dusty and oily surfaces
will stop your tape from sticking

THICK REMO TWO®

DECORATIVE & CONSUMER

THICK REMO TWO®

Double-sided adhesive foam block with removable adhesive on both sides, used to create 3-D effects

Specifications

- Adhesive: Removable on both sides
- Application Temperature: 65°F to 100°F
- Service Temperature: -20°F to 150°F
- For lightweight applications or filling gaps

TEMPORARY
DISPLAYS

CHANGEABLE
GRAPHICS

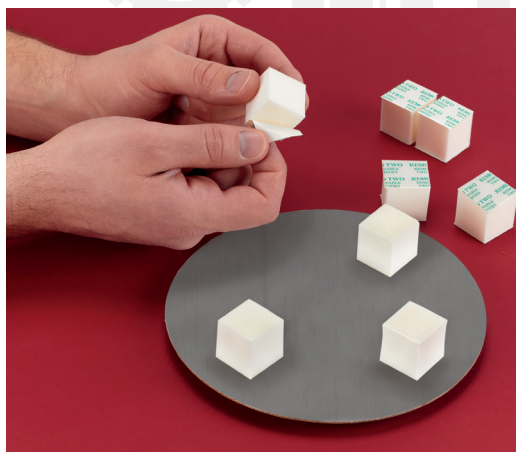
REMOVABLE
2 SIDES

Pre-Cut Pieces on a Roll, White

Part Number	Thickness in	Width in	Length in	Pieces/Roll
471043	1/2	1	1	3,000

Pre-Cut Pieces in a Pad, White

Part Number	Thickness in	Width in	Length in	Pieces/Pad	Pieces/Carton
471044	1/2	1	1	12	2,400
471053	3/4	1	1	36	4,320



WHERE TO USE THICK REMO TWO®

- Promotional and temporary signage
- Temporary and permanent displays
- Single use graphics
- Wobblers and shelf talkers



DECORATIVE AND CONSUMER PRODUCTS

THICK REMO TWO®

DECORATIVE & CONSUMER

TEMPORARY
DISPLAYS

CHANGEABLE
GRAPHICS

REMOVABLE
2 SIDES

Individual Pieces, White

Part Number	Thickness in	Width in	Length in	Pieces/carton
471058	1	1	1	6,012
471060	1	1	3	1,440
471072	2	2	2	840



TIPS

- Attach temporary, lightweight graphics at location making them "stand out" on existing signs or displays.
- Try black Thick Remo Two® on dark backgrounds.
- Place foam blocks 1" – 2" from the edge of dimensional graphics to create a clean 3-D effect.



**FAST
SHIPPING**



**When time is limited,
every second counts.**

So, we've extended our
same day shipping hours to better
meet your needs on in-stock products.

DECORATIVE AND CONSUMER PRODUCTS



THICK REMO TWO®

DECORATIVE & CONSUMER

Pre-Cut Pieces on a Roll, Black

Part Number	Thickness in	Width in	Length in	Pieces/Roll
471188	1/2	1	1	3,000

TEMPORARY
DISPLAYS

CHANGEABLE
GRAPHICS

Pre-Cut Pieces in a Pad, Black

Part Number	Thickness in	Width in	Length in	Pieces/Pad	Pieces/Carton
471189	1/2	1	1	12	2,400

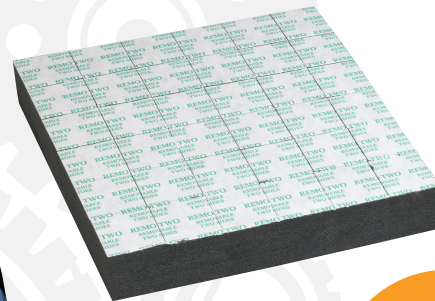
REMOVABLE
2 SIDES

Individual pieces, Black

Part Number	Thickness in	Width in	Length in	Pieces/Carton
471203	1	1	1	6,012



Use black foam blocks on dark backgrounds for a clean look.



1/2" block

1" block



**TRY BEFORE
YOU BUY!**

Call or go online
to order free samples.

DURACO.

DECORATIVE AND CONSUMER PRODUCTS

DURACO® MAGNETIC TAPE DECORATIVE & CONSUMER

Duraco's Magnetic Tapes are a flexible magnetic material coated on one side with a permanent adhesive.

CHANGEABLE
GRAPHICS

TEMPORARY
DISPLAYS



WHERE TO USE DURACO® MAGNETIC TAPE INDOOR

.030"

- Lightweight applications
- Graphics
- Pocket attachment
- Calendars

.060"

- Lightweight plastics
- Appliance signage
- Banners
- Nameplates
- Advertising signs

DURACO® MAGNETIC TAPE INDOOR

Flexible magnetic material with high initial tack

Specifications

- Adhesive: Rubber-based on one side
- Application Temperature: Above 50°F
- Service Temperature: 0°F to 150°F

Features

- Available in two thicknesses for wide application needs

Pre-Cut Pieces on a Roll

Part Number	Thickness	Width	Length	Pounds Pull/Piece	Pieces/ Roll
	in	in	in		
473140	.030	1	1	0.54	1,200
473141	.030	1	2	1.08	600
473142	.030	1	3	1.63	400
473143	.030	1	4	2.17	300
473144	.030	1	5	2.71	240
473145	.060	1	1	1.17	1,200
473146	.060	1	2	2.33	600
473147	.060	1	3	3.50	400
473148	.060	1	4	4.67	300
473149	.060	1	5	5.83	240

Continuous Roll

3" diameter core

Part Number	Thickness	Width	Length	Pounds Pull/Ft	Rolls/Carton
	in	in	ft		
473118	.030	1/2	100	3.3	11
473119	.030	3/4	100	4.9	7
473112	.030	1	50	6.5	10
473120	.030	1	100	6.5	5
473128	.030	1	200	6.5	2
473121	.030	1-1/2	100	9.8	3
473113	.030	2	50	13.0	5
473122	.030	2	100	13.0	2
473129	.030	2	200	13.0	1
473114	.060	1/2	50	7.0	11
473123	.060	1/2	100	7.0	5
473115	.060	3/4	50	10.5	7
473116	.060	1	50	14.0	5
473125	.060	1	100	14.0	2
473126	.060	1-1/2	100	21.0	1
473117	.060	2	50	28.0	2
473127	.060	2	100	28.0	1

DECORATIVE AND CONSUMER PRODUCTS



DURACO® MAGNETIC TAPE DECORATIVE & CONSUMER

DURACO® MAGNETIC TAPE OUTDOOR

Flexible magnetic material ideal for applications with exposure to sunlight or adherence to flexible plastics

TEMPORARY
DISPLAYS

CHANGEABLE
GRAPHICS

Specifications

- Adhesive: Acrylic-based on one side
- Application Temperature: Above 50°F
- Service Temperature: 0°F to 200°F

Features

- Available in two thicknesses for wide application needs

Continuous Roll

3" diameter core

Part Number	Thickness	Width	Length	Pounds Pull/Ft	Rolls/Carton
	in	in	ft		
473100	.030	1/2	100	3.3	11
473101	.030	3/4	100	4.9	7
473102	.030	1	100	6.5	5
473110	.030	1	200	6.5	2
473096	.060	1/2	50	7.0	11
473105	.060	1/2	100	7.0	5
473097	.060	3/4	50	10.5	7
473106	.060	3/4	100	10.5	3
473098	.060	1	50	14.0	5
473107	.060	1	100	14.0	2
473109	.060	2	100	28.0	1



WHERE TO USE DURACO® MAGNETIC TAPE OUTDOOR

.030"

- Lightweight applications
- Window graphics

.060"

- Lightweight plastics
- Banners
- Outdoor signage



FOR
COMPARISON...
**A dime is
approximately
.030" thick**



CALL AN EXPERT!

Can't find what you need?
Call us and let one of our
experts help you find the
right product for the job!

866 800 0775

DURACO.
DECORATIVE AND CONSUMER PRODUCTS

HOOK AND LOOP® FASTENERS

DECORATIVE & CONSUMER

Duraco® Hook and Loop fasteners have a strong adhesive that adheres quickly. The products come on a clear polyester liner for easy release.

CHANGEABLE
GRAPHICS

PRINT
FINISHING
BINDERY

TEMPORARY
DISPLAYS

DURACO® HOOK AND LOOP

Strong hook and loop fastening on a clear polyester liner for easy release

Specifications

- Adhesive: Rubber-based permanent (not recommended in applications with direct UV exposure)
- Material: 100% nylon with clear polyester film liner
- Application Temperature: 65°F to 100°F
- Service Temperature: -20°F to 150°F

Features

- Clear polyester liner for easy release
- Bonds well to low surface energy plastics, corrugate, chipboard, glass, wood and powder-coated metal

Pre-Cut Pieces, White

Part Number		Width	Length	Pieces/Carton
Hook Side	Loop Side	in	in	
476832	476852	3/4	3	5,000
476837	476857	1	2	5,000
476838	476858	1	3	5,000
476839	476859	1	4	3,000
476841	476861	1	10	2,000

Pre-Cut Pieces, Black

Part Number		Width	Length	Pieces/Carton
Hook Side	Loop Side	in	in	
476877	476897	1	2	5,000
476878	476898	1	3	5,000
476879	476899	1	4	3,000
476880	476900	1	5	2,500

WHERE TO USE DURACO® HOOK AND LOOP

- Sample books
- POP displays
- Exhibits
- Enclosures
- Packaging
- Binders
- Pallet skirts

DECORATIVE AND CONSUMER PRODUCTS



HOOK AND LOOP® FASTENERS

DECORATIVE & CONSUMER

Rolls, White

Part Number		Width	Length
Hook Side	Loop Side	in	yd
476804	476816	1/2	25
476805	476817	5/8	25
476806	476818	3/4	25
476807	476819	1	25
476808	476820	1-1/2	25
476809	476821	2	25

CHANGEABLE
GRAPHICS

PRINT
FINISHING
BINDERY

TEMPORARY
DISPLAYS

Rolls, Black

Part Number		Width	Length
Hook Side	Loop Side	in	yd
476798	476810	1/2	25
476799	476811	5/8	25
476800	476812	3/4	25
476803	476813	1	25
476801	476814	1-1/2	25
476802	476815	2	25

Coins on a Roll, White

Part Number		Diameter in	Coins/Roll	Rolls/Carton
Hook Side	Loop Side			
476959	476961	3/8	1,800	24
476946	476954	1/2	1,440	24
476947	476955	5/8	1,200	24
476948	476956	3/4	1,028	18
476949	476957	7/8	900	18

Coins on a Roll, Black

Part Number		Diameter in	Coins/Roll	Rolls/Carton
Hook Side	Loop Side			
476958	476960	3/8	1,800	24
476942	476950	1/2	1,440	24
476943	476951	5/8	1,200	24
476944	476952	3/4	1,028	18
476945	476953	7/8	900	18

Use Duraco®
Hook and Loop
for signs that
require frequent
updating

TIP

Use Duraco® Hook and Loop
coins for packaging closures.

DURACO.
DECORATIVE AND CONSUMER PRODUCTS

HOOK AND LOOP® FASTENERS

DECORATIVE & CONSUMER

CHANGEABLE
GRAPHICS

PRINT
FINISHING
BINDERY

TEMPORARY
DISPLAYS

Spools, White

Part Number		Width	Length
Hook Side	Loop Side	in	yd
476962	476963	1/2	1,200
476970	476971	3/4	800
476974	476975	1	650

Spools, Black

Part Number		Width	Length
Hook Side	Loop Side	in	yd
476964	476965	1/2	1,200
476972	476973	3/4	800
476976	476977	1	650



ORDERING
HOOK?

DON'T
FORGET THE
LOOP!

NEED A REMOVABLE TAPE?



Check out our **REMO ONE®**
products starting on page 33

DECORATIVE AND CONSUMER PRODUCTS



HOOK AND LOOP® FASTENERS

DECORATIVE & CONSUMER

Mated Sets, White

Part Number	Width in	Length in	Sets/Carton
476904	1/2	2	5,000
476911	3/4	2	4,000
476912	3/4	3	2,500
476913	3/4	4	2,000
476914	3/4	5	1,500
476915	3/4	10	750
476916	1	1	5,000
476917	1	2	2,500
476918	1	3	2,000
476919	1	4	1,500
476920	1	5	1,000
476921	1	10	500

CHANGEABLE
GRAPHICS

PRINT
FINISHING
BINDERY

TEMPORARY
DISPLAYS

Mated Sets, Black

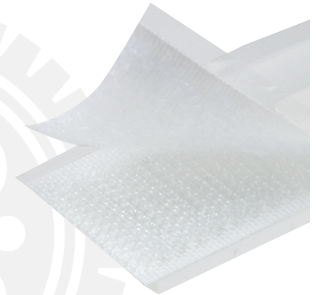
Part Number	Width in	Length in	Sets/Carton
476931	3/4	2	4,000
476932	3/4	3	2,500
476933	3/4	4	2,000
476936	1	1	5,000
476937	1	2	2,500
476938	1	3	2,000
476939	1	4	1,500
476940	1	5	1,000
476941	1	10	500

Mated Coins on a Roll, White

Part Number	Diameter in	Sets/Roll
476982	3/8	1,500
476983	1/2	1,000
476985	3/4	1,000
476986	7/8	1,000

Mated Coins on a Roll, Black

Part Number	Diameter in	Sets/Roll
476990	3/8	1,500
476991	1/2	1,000
476993	3/4	1,000
476994	7/8	1,000



HOOK AND LOOP® LOW PROFILE DECORATIVE & CONSUMER

CHANGEABLE
GRAPHICS

PRINT
FINISHING
BINDERY

TEMPORARY
DISPLAYS

DURACO® HOOK AND LOOP LOW PROFILE

Strong adhesive backing in a new slim profile that is up to 40% thinner than standard hook and loop

Specifications

- Adhesive: Rubber-based permanent (not recommended in applications with direct UV exposure)
- Material: 100% nylon with clear polyester film liner
- Application Temperature: 65°F to 100°F
- Service Temperature: -20°F to 150°F

Features

- Permanent adhesive
- Bond well to low surface energy plastics, corrugate, chipboard, glass, wood and powder-coated metal

Rolls, White

Part Number		Width	Length	Rolls/Carton
Hook Side	Loop Side	in	yd	
475792	475796	1/2	25	40
475793	475797	5/8	25	30
475794	475798	3/4	25	25
475795	475799	1	25	20

Rolls, Black

Part Number		Width	Length	Rolls/Carton
Hook Side	Loop Side	in	yd	
475800	475804	1/2	25	40
475801	475805	5/8	25	30
475802	475806	3/4	25	25
475803	475807	1	25	20

Coins on a Roll, White

Part Number		Diameter	Coins/Roll	Rolls/Carton
Hook Side	Loop Side	in		
475808	475812	1/2	1,440	30
475809	475813	5/8	1,200	25
475810	475814	3/4	1,028	20
475811	475815	7/8	900	20

Coins on a Roll, Black

Part Number		Diameter	Coins/Roll	Rolls/Carton
Hook Side	Loop Side	in		
475816	475820	1/2	1,440	30
475817	475821	5/8	1,200	25
475818	475822	3/4	1,028	20
475819	475823	7/8	900	20

WHERE TO USE DURACO® HOOK AND LOOP LOW PROFILE

- Sample books
- POP displays
- Exhibits
- Enclosures
- Packaging
- Binders



**TRY BEFORE
YOU BUY!**

Call or go online
to order free samples.

DECORATIVE AND CONSUMER PRODUCTS



THICK HOOK AND LOOP® DECORATIVE & CONSUMER

DURACO® THICK HOOK AND LOOP

Combines Twin Stick® with Duraco® Hook and Loop for better gap filling and conformability in a hook and loop fastener

CHANGEABLE
GRAPHICS

PRINT
FINISHING
BINDERY

TEMPORARY
DISPLAYS

Specifications

- Adhesive: Rubber-based permanent (not recommended in applications with direct UV exposure)
- Material: 100% nylon with clear polyester film liner
- Application Temperature: 65°F to 100°F
- Service Temperature: -20°F to 150°F

Features

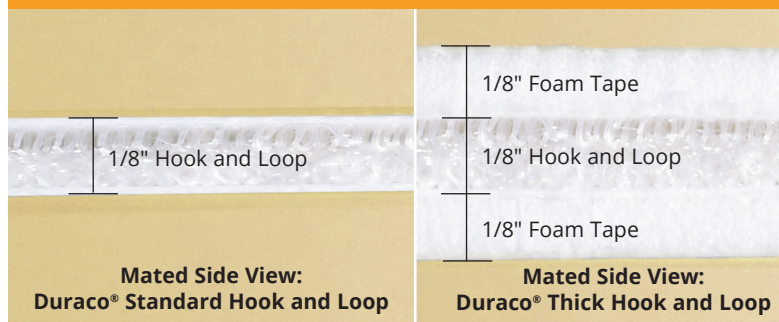
- Permanent adhesive
- Better gap filling and conformability

Pre-Cut Pieces on a Roll, Black

Part Number		Foam Thickness	Width	Length	Pieces/Roll
Hook Side	Loop Side	in	in	in	
471697	471706	1/8	1	4	1,500



COMPARE **THICK** HOOK AND LOOP TO OUR STANDARD HOOK AND LOOP



Fill gaps
in packaging
closures



DECORATIVE AND CONSUMER PRODUCTS

SEW ON HOOK AND LOOP® DECORATIVE & CONSUMER

CHANGEABLE
GRAPHICS

PRINT
FINISHING
BINDERY

TEMPORARY
DISPLAYS

DURACO® HOOK AND LOOP SEW ON

Provides strong hook and loop fastening and durability for sew on applications

Specifications

- Material: 100% nylon
- No adhesive

Rolls, White

Part Number		Width in	Length yd	Rolls/Carton
Hook Side	Loop Side			
472966	472967	1/2	25	40
472970	472971	5/8	25	30
472974	472975	3/4	25	25
472978	472979	1	25	20
472982	472983	1-1/2	25	14
472986	472987	2	25	10
472990	472991	4	25	5

Rolls, Black

Part Number		Width in	Length yd	Rolls/Carton
Hook Side	Loop Side			
472968	472969	1/2	25	40
472972	472973	5/8	25	30
472976	472977	3/4	25	25
472980	472981	1	25	20
472984	472985	1-1/2	25	14
472988	472989	2	25	10
472992	472993	4	25	5

WHERE TO USE DURACO® HOOK AND LOOP SEW ON

- Banners
- Event design
- Trade shows
- Fabric displays
- Orthopedics
- Medical devices
- Apparel



IN STOCK



866 800 0775

DECORATIVE AND CONSUMER PRODUCTS



SEAL RESEAL DECORATIVE & CONSUMER

ANCHORSEAL™ PERMANENT/REMOVABLE LABELS AND TAPES

A highly engineered permanent/removable closure tape formulated with a high tack low adhesion adhesive system. Available in three innovative designs offering long term removability within multiple re-closure applications.

- 3 unique closure technologies
- Long term removability
- Tear Resistant
- Excellent printing and converting properties
- Finger-lift design for ease of use
- Applications: Flexible packaging, Bag-in-a-Box, Paper Bag Closures



SEAL RESEAL CLOSURE

PERMANENT/PERMANENT

A durable permanent/permanent closure tape with a uniquely formulated rubber based adhesive system offering immediate bonding power to a variety of substrates.

- Permanent bag sealing tape
- Excellent immediate bond and shear resistance on a variety of substrates
- Superior printing and converting properties
- Applications: Food service bags, paper bag closures, flexible packaging

SEAL RESEAL CLOSURE

ULTRA-REMOVABLE

An ultra-removable, durable tape ideal for applications requiring multiple open and reclosure cycles. Maintains great resistance against environmental conditions.

- Long term reseal ability.
- Clean removal leaving no adhesive residue
- Excellent environmental and moisture resistance
- Excellent printing and converting properties
- Applications: Flexible, food, medical packaging, and ultra-removable applications.



FOOD ROTATION LABELS DECORATIVE & CONSUMER

DISSOLVABLE LABELS

An optimally designed food rotation label featuring a biodegradable adhesive & facestock that will dissolve completely within seconds when submerged in room temperature water with slight agitation.

- Disintegrates in water in seconds with slight agitation
- Non-residue/biodegradable adhesive and labelstock
- Available in direct thermal and thermal transfer constructions
- Flexographic, dry offset, and letter press compatible
- Sustainable alternative to traditional pressure sensitive label options
- Applications: Food rotation, craft supplies, school supplies, workshop organization



MAX-DUTY™ ULTRA-REMOVABLE LABEL

Max-Duty™ is film based label stock designed to work in the demanding food storage and preparation environment. This innovative label stock features a removable adhesive that bonds aggressively to various surfaces, but removes cleanly, leaving no adhesive residue.

- User-friendly “lift anywhere” design
- Ultra-removable non-residue adhesive system
- Environmental and moisture resistance
- Excellent printing and converting properties
- Applications: Food container date code labels, inventory labels



FOOD ROTATION LABELS DECORATIVE & CONSUMER

CLEANSTIK™

REGULAR & DIRECT THERMAL

CleanStik™ is a general-purpose, paper-based food label designed to perform in various food rotation and preparation applications. CleanStik™ will bond aggressively to multiple surfaces and remove cleanly, leaving no adhesive residue. CleanStik™ is available in regular and direct thermal versions.

- Available in regular and direct thermal
- Ultra-removable, non-residue food rotation label
- Excellent adhesion to multiple surfaces
- Custom “lift edge” design
- Excellent converting & die-cutting
- Applications: Food container date code labels, inventory labels



ARTICSTIK™

REGULAR & DIRECT THERMAL

ArticStik™ is a freezer grade label designed to bond to cold, wet or damp applications. This innovative label, available in regular and direct thermal version, is ideal for food packaging & distribution, packaged poultry and meats, and frozen logistical applications.

- Excellent cold temperature & moisture resistance
- Available in regular and direct thermal versions
- Modifiable facestocks and liners
- Compatible with a variety of substrates including film, corrugate, flexible packaging, and paperboard



SECURITY & BRAND PROTECTION

DECORATIVE & CONSUMER

SIGMAGUARD™

Sigmaguard™ is a cellulose-based acetate modified to allow the tear strength to be varied to meet the customer's exact needs. When used as a label, seal, or over-laminate, attached by an adhesive, the film is almost impossible to remove without easily noticeable damage to the film itself or the surface to which it is attached.

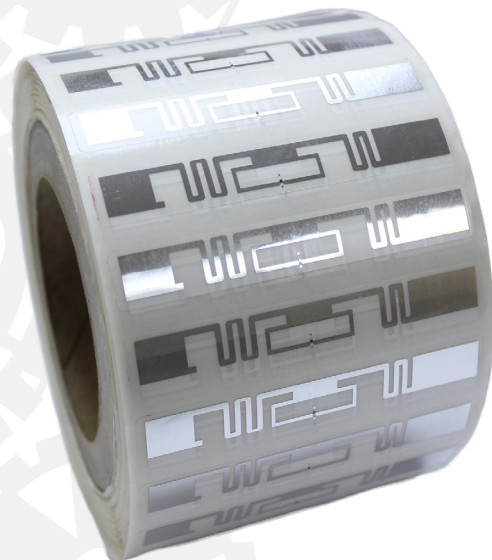
- Highly frangible/destructible
- Offers good printability
- Highly transparent
- Made from sustainable wood pulp
- Applications: Carton closures, over-lamination, indoor anti-vandal signs



RFID CUSTOM LABELSTOCK

A customizable labelstock for RFID applications designed to perform well despite challenging environments.

- Designed to withstand difficult environmental conditions
- Provides counterfeit and theft protection
- Maintains long-term durability and product life
- Customizable - permanent, removable, seal/reseal technologies and adhesive additives, pigmentation, security features, print quality, die-cutting, matrix stripping, and label application
- Available in a variety of carriers and facestocks
- Applications: RFID labelstock



DID YOU KNOW?

3 Sigma's labelstock offers many customizable features, such as:

- Permanent, removable, seal/reseal technologies
- Adhesive additives
- Pigmentation
- Security features



IRC COUPON LABELS DECORATIVE & CONSUMER

CLBB035WB, COUPON FILM - UNIVERSAL PATTERN

Coupon film engineered with Strata-Tac's innovative star pattern. Ideal for use in the production of IRC labels.

- Star pattern coupon with will allow the consumer to pull from any side of the coupon to remove it from the product
- May be laminated to the customer's face stock of choice
- Film base liner available upon request
- All temperature, high-tack adhesive
- Applications: IRC coupons

Strata-Tac
Advanced Coating Technologies

DECORATIVE AND CONSUMER PRODUCTS



CONSUMER & PACKAGE GOODS

DECORATIVE & CONSUMER

OLMVE026, 1 MIL SOFT TOUCH POLYESTER OVERLAMINATE

1 mil clear PET with a soft-feel matte over-laminate for labels on press.

- Soft-feel matte topcoat enhances the look and haptics of the labels
- Topcoat features excellent scratch resistance and chemical resistance
- Face stock offers excellent durability
- #50610 permanent adhesive providing chemical and water resistance
- Applications: Prime labels and packaging labels

LHF050C, 2 MIL SEAMLESS RAINBOW HOLOGRAPHIC PET PRESSURE SENSITIVE LABEL

A two mil metalized PET with a rainbow hologram and permanent adhesive and clear polyester liner.

- Rainbow holographic labels draw attention and ignite interest in the product
- General permanent adhesive
- Clear polyester liner with smooth, easy release properties, ideal for high speed label applicators
- Applications: Bottle labeling and security labels



LPASLVF065, HIGH-GLOSS METALIZED PRESSURE SENSITIVE LABEL

A 2.6 mil 56# Bright Silver Metallized High Gloss Paper complete with permanent adhesive and 1.5 mil clear polyester release liner.

- Features a paint primer that allows for high color graphics
- Offers a general purpose permanent adhesive with some short term repositionability
- Clear polyester release liner ideal for automatic application
- Applications: Glass, plastic, and paper containers



DECORATIVE AND CONSUMER PRODUCTS

Strata
tac
Advanced Coating Technologies

QUESTAR® SOFT TOUCH DECORATIVE & CONSUMER

Soft Touch polyester film is a plastic film that has been treated to feel soft and smooth to the touch. Soft Touch PET film has tactile, physical, mechanical, optical, thermal, electrical, and chemical properties that make it very well suited for many specialized applications. Soft Touch PET film is supplied in slit-to-width rolls, cut sheets, and fabricated components.

QUESTAR® SOFT TOUCH PET FILM (PREMIUM PRODUCT - (CP267)

A clear polyester film that is matte coated on one side and corona treated on the other. This top coating offers a luxurious tactile feel when touched.

- Aesthetics: Ultra-low gloss film with a soft tactile feel and excellent contact clarity when reverse printed.
- Key Benefits: Increased perceptions of quality, high COF properties, excellent handling characteristics, eliminated wash-out from reflected light.
- Substrate: Polyester
- Gauge: 48/91-200
- Available in PVdC PET (50 gauge) , PCR PET, Nylon (60 gauge), MDOPE (90 gauge, 1.5mil)
- Available in various web widths and lengths
- Classifications: FDA approved & ISO Certified



Adding value to
your packaging

Filmquest

DECORATIVE AND CONSUMER PRODUCTS

MATTE SOFT TOUCH DECORATIVE & CONSUMER

Propel your packaging appeal to the next level by utilizing Soft Touch Matte or Ultra-Soft Touch Matte top coating. These films provide a delicate, luxurious tactile feel when touched, without compromising durability and strength. When laminated to a printed sheet, image colors remain strong and vibrant so that you can experience the perfect combination of soft tactile feel, excellent graphics, and dependable quality.



TRY BEFORE YOU BUY!

Call or go online
to order free samples.



SOFT MATTE FILM (STANDARD PRODUCT)

A polyester film with soft touch matte coating that offers multiple high-end, durable characteristics.

- Aesthetics: Soft, tactile feel and matte opaque finish.
- Key Benefits: Adhesion to a variety of substrates, high COF properties, excellent contact clarity, and outstanding scratch and scuff resistance.
- Substrate: Polyester, polyethylene, or BOPP
- Gauge: 48-200
- Available in PVdC PET (50 gauge), PCR PET, Nylon (60 gauge), MDOPE (90 gauge, 1.5mil)
- Available in various web widths and lengths
- Classifications: SQF & ISO Certified

ULTRA-SOFT MATTE FILM (PREMIUM PRODUCT)

A polyester film coated to feature ultra-soft matte tactile features, excellent qualities, and offer customization options.

- Aesthetics: Ultra-soft tactile features and matte opaque finish.
- Key Benefits: Great adhesion to substrates, high COF properties, excellent contact clarity, outstanding scratch and scuff resistance, revertible haze, and gloss levels with vendor specific OPV.
- Substrate: Polyester, polyethylene, or BOPP
- Gauge: 48-200
- Available in PVdC PET (50 gauge), PCR PET, Nylon (60 gauge), MDOPE (90 gauge, 1.5mil)
- Available in various web widths and lengths
- Classifications: SQF & ISO Certified

**EXCEEDING YOUR TOP
COATING EXPECTATIONS**

DECORATIVE AND CONSUMER PRODUCTS

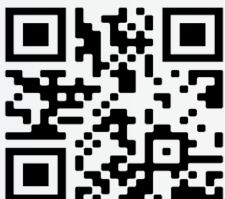


SOFT TOUCH TOP COATING DECORATIVE & CONSUMER



Filmquest
RAYVEN
DECORATIVE AND CONSUMER PRODUCTS

CUSTOMIZATIONS	BENEFITS	APPLICATIONS
Chemical treatment	Premium soft tactile feel	Luxury packaging
PVdC coating	Heightened aesthetic appeal	Pet food packaging
One or two side corona treatment	Superior scuff & scratch resistance	Food & beverage
Lidding stock	Superior ink & adhesive adhesion	Cosmetics packaging
Metalized	Glare & wash-out prevention	Book covers
Substrates	Sustainable options	Labels
Coat weight	Quick & accurate color match	Consumer goods packaging



SCAN
TO
LEARN
MORE

PAPER RELEASE LINERS

DECORATIVE & CONSUMER

Infinity offers a variety of paper, polyester, and polypropylene release liners. These smoothly releasing liners offer a range of qualities, including metalized film, high temperature resistance, antistatic properties, standard printing, custom printing, and color choices. Compatible with many types of adhesive, there is sure to be a release liner that perfectly fits your application.

42# PAPER LINER

A 42# paper liner coated on one side with easy release silicone.

- Key Benefits: Smooth release, compatible with many adhesives, offered with standard or custom printing.
- Release liner: 42# bleached SCK paper
- Coating: Coated on one side with easy release silicone



53# PAPER LINER

A 53# paper liner coated on one side with easy release silicone.

- Key Benefits: Smooth release, compatible with many adhesives, available with standard or custom printing.
- Release liner: 53# bleached SCK paper
- Coating: Coated on one side with easy release silicone

DID YOU KNOW?

Infinity Tapes offers a wide range of converting capabilities, including:

- Flexographic printing
- Silicone coating
- Hot melt adhesive coating up to 40"
- Slitting
- Spooling

CUSTOMIZE

- Standard Printing: "Remove Liner to Expose Adhesive"
- Custom Printing

DECORATIVE AND CONSUMER PRODUCTS


Infinity Tapes
Manufactured in the USA

RELEASE LINERS

DECORATIVE & CONSUMER

PET901 MET

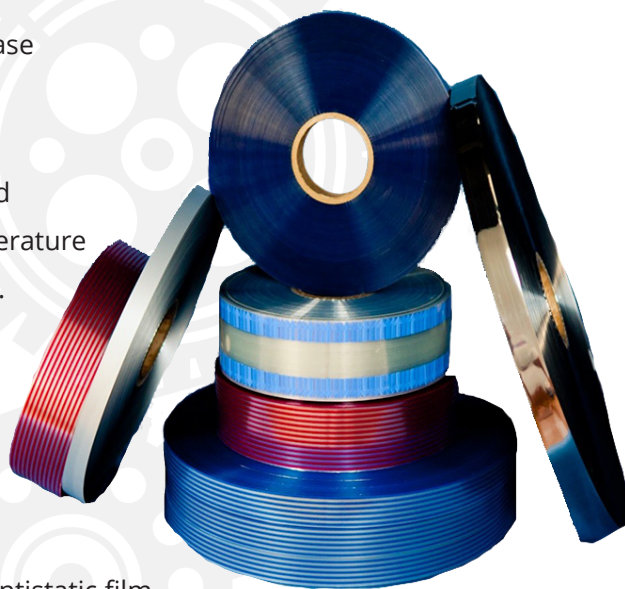
A metalized polyester film release liner providing excellent smooth release.

- Key Benefits: Smooth release, compatible with many adhesives, eliminates static cling, offers the highest temperature resistance and highest strength of all plastic film release liners.
- Release liner: 1.0mil polyester metallized film
- Coating: Coated on metallized side with easy release coating

PET901

A clear polyester film coated on one side with easy release silicone and printed on the other side with the words, "Remove Liner to Expose Adhesive."

- Key Benefits: Easy release, custom printed wording and colors, compatible with many adhesives, highest temperature resistance and highest strength of all plastic film liners.
- Release liner: 1.0mil clear polyester film
- Coating: Coated on one side with easy release silicone, printed on the other side



PP701.2 MET BOPP

A clear printed or unprinted metalized silicone coated antistatic film.

- Key Benefits: Smooth release, compatible with many adhesives, features anti-static properties, is available printed or unprinted.
- Release liner: 1.18mil metallized polypropylene film
- Coating: Coated on one side with easy release silicone



PP502

A clear printed or unprinted BOPP film coated on one side with easy release silicone and printed on the other with the words, "Remove Liner to Expose Adhesive."

- Key Benefits: Easy release, printed or unprinted options, custom printed wording, great strength, compatible with many adhesives.
- Release liner: 1.38mil clear BOPP film
- Coating: Coated on one side with easy release silicone, printed on the other side

PAPER RELEASE LINERS

DECORATIVE & CONSUMER

Rayven offers release liners with many different release chemistries and a range of release values, ranging from easy to extra tight (10 gpi - 400 gpi), UV cured, and thermally cured releases. Rayven will match the chemistry to the application to yield the desired release performance. Substrate compatibility and heat resistance are also considered when choosing a silicone release coating.

SUPER CALENDARED KRAFT (SCK)

SCK release liners extend beyond traditional paper liners and are smoother than regular paper liners. This allows the ability to work with the majority of applicators making SCK a go-to option for product labels.

- Key Benefits: Polished liner for increased smoothness, highly compatible with many applicators, customizable
- Release liner: Super calendared kraft paper - 38#, 42#, 53#, 78#
- Coating: Silicone

POLY COATED KRAFT (PCK)

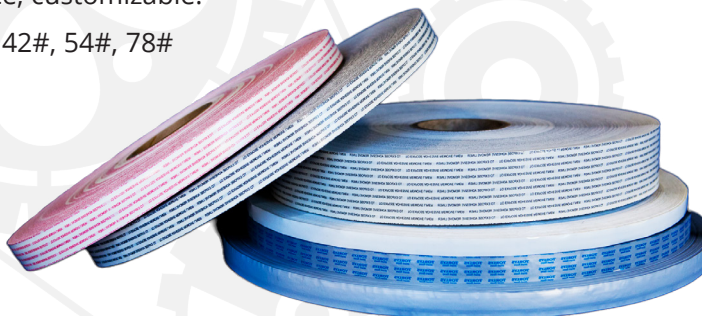
Release liners with a layer of polypropylene that ensures a more stable and sturdy liner. The addition of polypropylene acts as a moisture barrier, making this liner ideal for wine labeling.

- Key Benefits: Stable and sturdy performance, ideal for a lay-flat end product, good moisture resistance, great for industries familiar with paper release liners but need moisture resistance, customizable.
- Release liner: Poly coated kraft paper - 60#, 80#, 90#
- Coating: Silicone

CLAY COATED KRAFT (CCK)

Considered the "Economical Paper Liner," CCK release liners are ideal for the general industrial segment where customers prioritize a price point for their liner in the marketplace.

- Key Benefits: Inexpensive, great performance, customizable.
- Release liner: Clay coated kraft paper - 38#, 42#, 54#, 78#
- Coating: Solutions



FILM RELEASE LINERS

SPECIALTY LABEL SOLUTIONS

POLYESTER

Traditional PET release liners that are compatible with a wide variety of adhesives. These durable liners are difficult to tear or break and are ideal for high-speed applicators.

- Key Benefits: Many gauges to choose from, great tear resistance, ideal for high-speed applicators, good resilience when faced with difficult environments, weather, and moisture.
- Release liner: Polyester film - 92ga, 142ga, 200ga, 300ga, 400ga, 500ga
- Coating: Silicone

LOW-DENSITY POLYETHYLENE (LDPE)

LDPE release liners feature resilience and are challenging to tear or break. These liners are strong enough to withstand difficult environments and are great for use on end products exposed to weather and moisture.

- Key Benefits: Multiple liner thicknesses available, great tear resistance, withstand difficult environments.
- Release liner: Low-density polyethylene film - 1mil, 1.5mil, 2mil, 2.5mil, 3mil – 10mil
- Coating: Silicone

HIGH-DENSITY POLYETHYLENE (HDPE)

HDPE release liners are the perfect choice for applications requiring extra strength and durability. This strong film is resistant to tears and breaks and can withstand challenging environments.

- Key Benefits: Many liner thickness options, extremely strong and durable, resistant to tears and breaks, maintains performance despite difficult environments.
- Release liner: High-density polyethylene film - 1.5mil, 2mil, 2.5mil, 3mil – 10mil
- Coating: Silicone

POLYPROPYLENE

Polypropylene release liners are excellent for use with applications that are exposed to high temperatures and are compatible with a wide array of adhesives.

- Key Benefits: Multiple thickness choices, compatible with applications exposed to high temperatures, compatible with many adhesives.
- Release liner: Polypropylene film - 1.4mil, 1.6mil, 2mil, 3mil
- Coating: Silicone

DID YOU KNOW?

The general categories of silicone release coatings that Rayven uses are thermal curing and UV curing. Within these categories, Rayven has several silicone resins and carriers. The carriers can be solvent, water, or 100% solids where no carrier is needed.

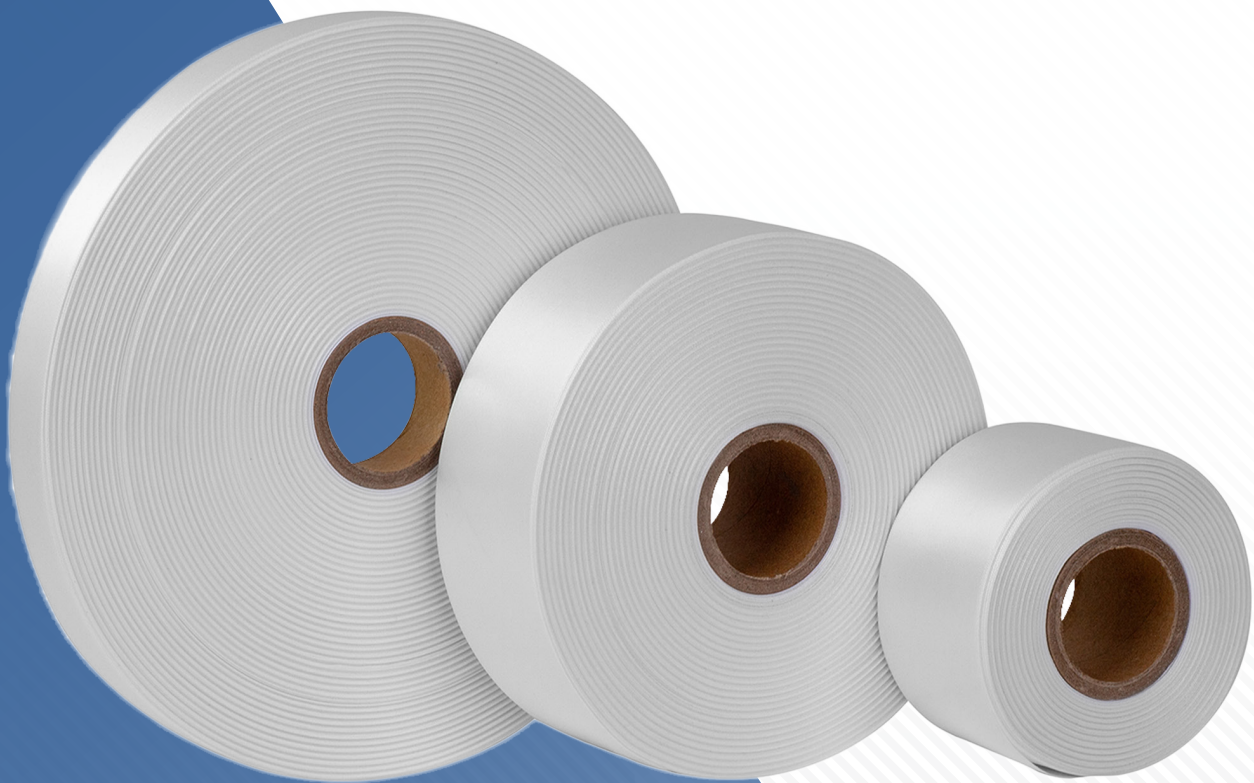


DECORATIVE AND CONSUMER PRODUCTS

GOING ABOVE AND BEYOND TOGETHER

TO GIVE YOU THE BEST TOP COATING SOLUTIONS





TAPE
EXPERTS



MADE TO
ORDER



RAPID
TURNAROUND



CUSTOM
SOLUTIONS



CUSTOM
CONVERTING

Coat.
Convert.
Customize.



USA
Manufacturer

duraco.com | 866 800 0775 | sales@duraco.com



Filmquest

